

SILVERSANDS

NORTH COAST

The
Cove
Selection



LAGOON LIVING
REDEFINED

by

OGA
HOSPITALITY





Table of Contents

- I. About **ORA**
- II. Ora Hospitality
- III. About Silversands
- IV. Location
- V. Masterplan
- VI. The Cove Selection
- VII. Units
- VIII. Floorplans

About ΟΓΑ



ORA is a developer with an ethos to deliver unmatched experiences that embody human aspirations of self-fulfillment and the pinnacle of happiness through a sensory approach that can only be described as a surreal yet perfect moment of lifetime achievement in luxury living. Reimagining time, our projects are often likened to a luxury timepiece that offers perfect blends of intricate detail, which can only result in a flawless breathtaking moment of awe-inspiring serenity of luxury living.

We pride ourselves in the mastery of creating beautiful environments that balance exceptional thinking with enduringly sensitive design, where every moment promises a lasting memory. Embracing the natural environment of our uniquely selected locations, we take great care in designing and developing high-quality projects that not only sit comfortably within their surroundings but also have sustainability at their core. Our developments are living, breathing lifestyle destinations that collectively work together to avail that perfect moment where life and luxury meet—a moment for a timeless experience.



We dream big. We design to make a difference and bring happiness. We embrace creativity, innovation, sustainability and harmony.

“ORA’s position is strong; it holds a legacy which has been earned through credibility, a diversified portfolio as well as offering the precious culture of happiness”

NAGUIB SAWIRIS | CHAIRMAN & CEO

Global Vision

OUR EXPANDING PORTFOLIO OF PROJECTS SPANS A RICH VARIETY OF STUNNING DEVELOPMENTS IN SELECT LOCATIONS AROUND THE WORLD.



GRENADA

GREECE

CYPRUS

EGYPT

IRAQ

UAE

PAKISTAN



SILVERSANDS

MERVELLIS



AYIA NAPA MARINA

Bayn
بين
GHANTOOT | by OGA

PYRAMID HILLS

مدينة الورد
MADINAT AL WARD

EIGHTEEN

SOLANA™
BY OGA

COMING SOON
MYKONOS

ΟΓΑ
HOSPITALITY



A promise to enlighten your path of self-discovery through a serene approach. Similar to a moment in time, Silversands Hotels and Resorts takes you on a journey of life discovery. We not only ensure to provide you with a home away from home, but we also ensure that your stay with us is engrained in the “happy place” of your memories. Our commitment to detail is in every turn of the property you are visiting; we leave nothing to the imagination with intricate detail that is simply awe-inspiring. We are committed to delivering a range of life-changing experiences that leave lasting memories with a promise to enlighten your path of self-discovery through a serene approach that blends the wants and needs of mind and body, reconnecting you with nature and the promise of an endless moment of serenity that is sure to bring a smile at the thought of it.

About SILVERSANDS



You'd never leave a moment unlived, or hold off on a good experience. If anything, you search for it day and night because indulgence is your mantra. You take in the unspoiled beauty of nature and also enjoy the rhythmic momentum of modern luxuries. You find pleasure in watching day and night melt into one as the music moves your picture-perfect view. You dip your feet into the warmth of the minuscule crystals of the earth, touched by the foam of the Mediterranean's azure shores.

You refuse to leave because you know what you deserve. You know deep down that there's nowhere else to be. Silversands is not for everyone. But by the looks of you right now, it seems like it's made for you. We give meaning to the concept of feeling alive, experiencing bites of bursting flavors that make your senses tingle. Feel the sweet shimmers of blues waddle their way toward the shore beneath your feet. As the red-purple hues of the sunset rest down upon you, turning the distant view to tinted scarlet and violet.

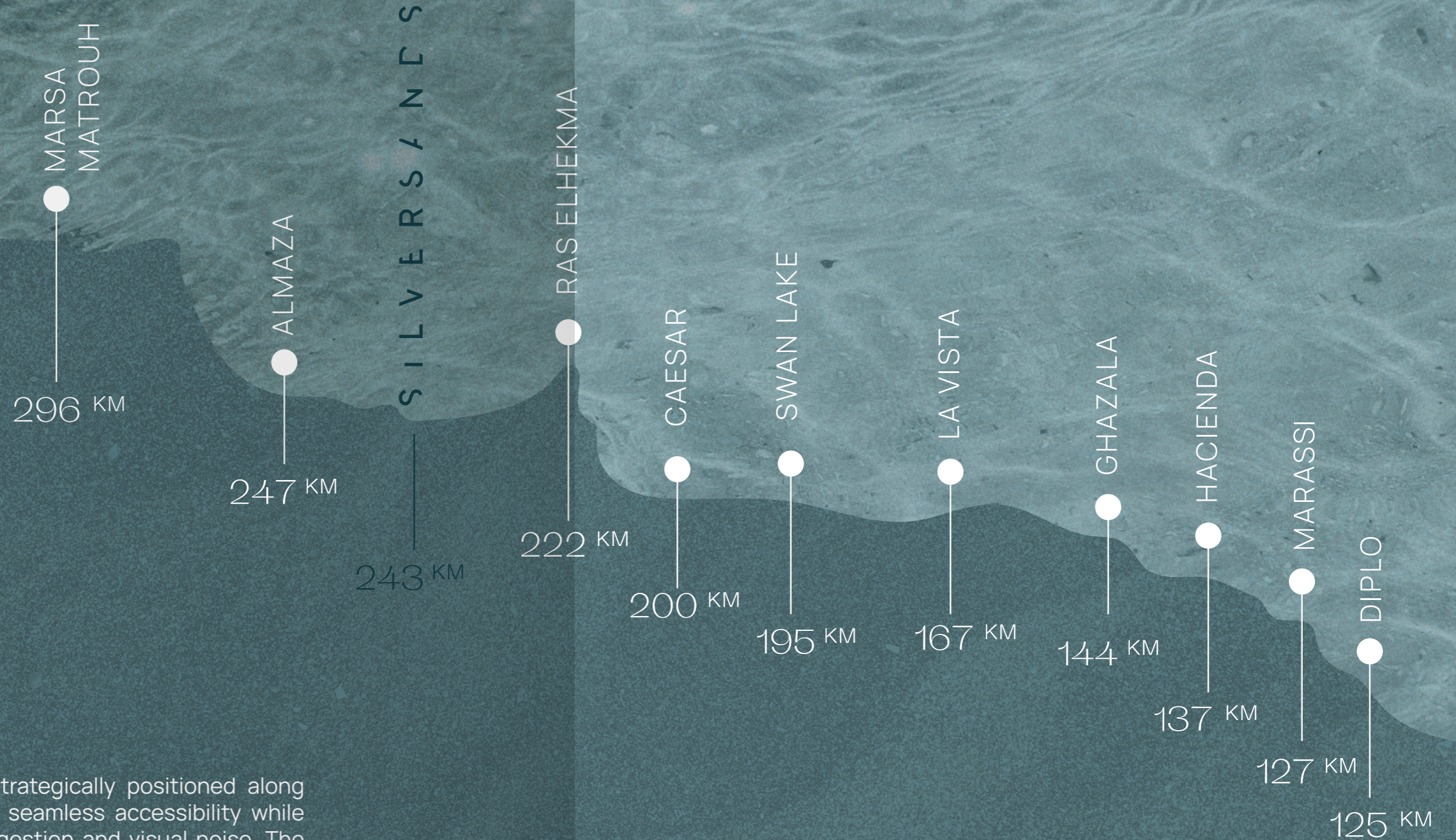
Project Size
724 Feddans

Beachfront
1.4 Km

Lagoons
160,000 Sqm

Spine Length
1.2 Km

Hotels
2



Silversands North Coast is strategically positioned along Egypt's North Coast, offering seamless accessibility while remaining insulated from congestion and visual noise. The site enjoys proximity to established destinations such as Silvertown and Sidi Heneish, with direct access from primary roads and clear internal circulation.

The Cove Selection sits within the inner enclave, benefiting from calmer internal positioning while remaining moments away from retail, leisure, and beachfront experiences. This balance allows residents to choose their pace, connected when desired and removed when needed.

Alexandria	220KM
Alamein	130KM
Borg El Arab	202KM
Cairo	370KM
Almaza	4KM



SILVERSANDS
Masterplan







The Cove Selection

The Cove Selection is a curated residential offering defined by Ora Hospitality set within a calm, inward-oriented lagoon environment reserved exclusively for its residents.

Designed with a focus on refinement, identity, and long-term value, these homes bring together considered architecture, elevated detailing, and a lifestyle shaped by water, light, and landscape.

Residences are arranged to open toward private lagoons and layered greenery, allowing natural light and uninterrupted views to shape everyday living while preserving a sense of privacy and composure. Proportions, materials, and spatial flow are thoughtfully calibrated to create interiors that feel balanced, timeless, and quietly sophisticated.

The Cove Selection delivers a branded residential experience where exclusivity is expressed through access, atmosphere, and intention. A setting defined by clarity, comfort, and character, designed to feel composed, personal, and enduring over time.



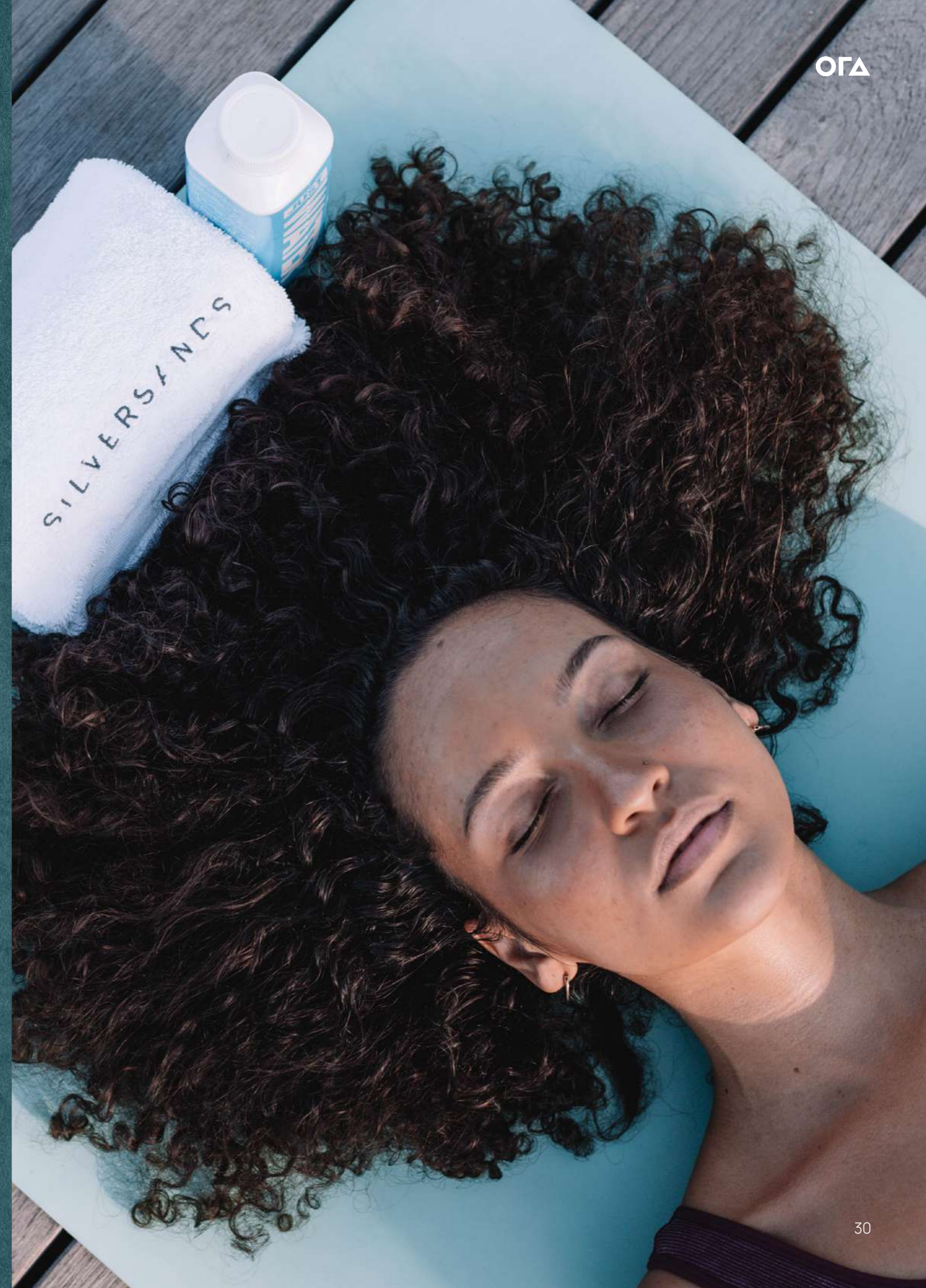
Born from the nexus of light that guides us through life.

The Cove Selection is Silversands private enclave, a place where light hits the crystal lagoon and distills the noise. Here lagoon living takes a new form, a place where intimacy, clarity, and balance shape everyday life. A place where the stillness of the water reflects the stillness of the mind, ushering in a newfound era of peace and tranquility. Here water is the centerpiece, the focal point of this community, mirroring the mediterranean coast, where each branch is carved intentionally to nurture the environment around it. Here the lagoon acts as the nexus, guiding the placement of homes, pathways, and shared spaces in a way that feels natural, calm, and intentional.

Designed as an enclave, this is a retreat, a private getaway within the ecosystem of Silversands. The Cove Selection is conceived as an inward-oriented enclave, with low-rise buildings arranged to open toward bright swimmable lagoons and landscaped spaces, creating a calm sense of privacy while preserving light, openness, and uninterrupted views. It is defined by gentle transitions, layered greenery, and a carefully considered sense of scale that prioritizes privacy without isolation. Residences are arranged around lagoon edges and landscaped pockets, creating an inward-focused environment that feels composed and personal, while remaining seamlessly connected to Silvertown's retail hub and the wider destination's lifestyle, amenities, and social heart.

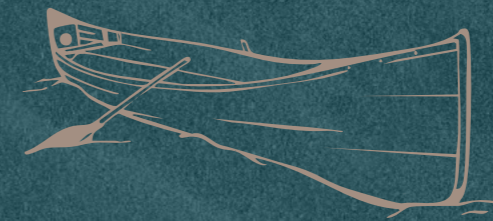
A way of living rooted in pause and purpose, where water becomes part of daily routine rather than a visual promise, and where the experience of home is shaped by quiet movement, soft light, and a lasting sense of belonging.

This is **Lagoon Living Redefined**





The
Cove
Selection
Zoned
Masterplan







The
Cove
Selection
Coded
Masterplan







Amenities

Amenities at The Cove Selection are conceived as quiet extensions of residential life rather than destinations to visit and leave behind. Thoughtfully distributed across moments of rest, movement, and social connection, each space supports daily living within a calm, inward-oriented environment. Many areas are designed as flexible, multi-functional communal spaces that adapt naturally to different uses throughout the day.

Lagoon Pockets & Semi-Private Swimming Zones



Select lagoon edges and semi-private swimming areas are reserved exclusively for residents, integrated directly into the residential fabric to offer a daily relationship with water that feels personal, relaxed, and unforced.

Shaded Walking, Jogging & Cycling Loops



A continuous network of naturally shaded paths moves through water and greenery, encouraging effortless movement, outdoor routines, and a slower, more grounded pace of life within a protected setting.

Neighborhood Parks & Landscaped Courtyards

Intimate courtyards and planted pockets form quiet anchors within residential clusters, providing shaded spaces for rest, play, and everyday moments close to home.

Clubhouse

The clubhouse serves as a private communal anchor, offering a welcoming and well-considered setting for everyday use, informal gatherings, and moments of connection among residents.

Retail and F&B

Select lawns provide adaptable settings for small-scale gatherings and shared moments, reinforcing a sense of belonging while maintaining privacy and calm.

Exclusivity

The Cove Selection is defined by a more private rhythm of living, where key water-side amenities and select communal spaces are reserved for residents. Access is intentional and controlled, creating an environment that feels composed, protected, and distinctly personal.

Elevated Living

Every amenity within The Cove Selection is shaped by a higher level of consideration in placement, detailing, and atmosphere. Together, these spaces support a refined residential experience that feels coherent, understated, and enduring.

Comfort

Amenities are intentionally scaled for ease and everyday use. Shaded paths, landscaped pockets, and calm communal settings support daily routines without effort, ensuring a living experience that feels natural, relaxed, and consistently comfortable.



Units

Residences at The Cove Selection comprise a curated collection of one, two, and three bedroom apartments. Set within double-loaded buildings, each home is oriented to capture uninterrupted lagoon or garden views, abundant natural light, and a heightened sense of privacy.

Layouts are precisely composed to balance openness and retreat. Living spaces flow seamlessly onto terraces overlooking resident-only water and greenery, while bedrooms are inward-facing by design, offering calm, privacy, and a sense of quiet separation.

Across all unit types, proportions are carefully calibrated to support flow, balance, and ease of living. Light, landscape, and water are integral to each home, shaping interiors that feel considered, refined, and timeless.



Architecture and Design

The Cove Selection is rooted in a modern Mediterranean expression, drawing from contemporary Spanish coastal influences to create a refined, timeless character. Clean lines, balanced proportions, and light natural tones are complemented by well-proportioned terraces and carefully placed openings that introduce rhythm, transparency, and depth across the façades, while landscaped buffers soften the transition between private residences and shared outdoor spaces.

Intentionally low-rise in scale, the buildings preserve uninterrupted lagoon views and maintain a human, approachable presence, allowing the architecture to sit quietly within its surroundings and frame the landscape rather than compete with it.

Building 1



Courtyard View



Courtyard View

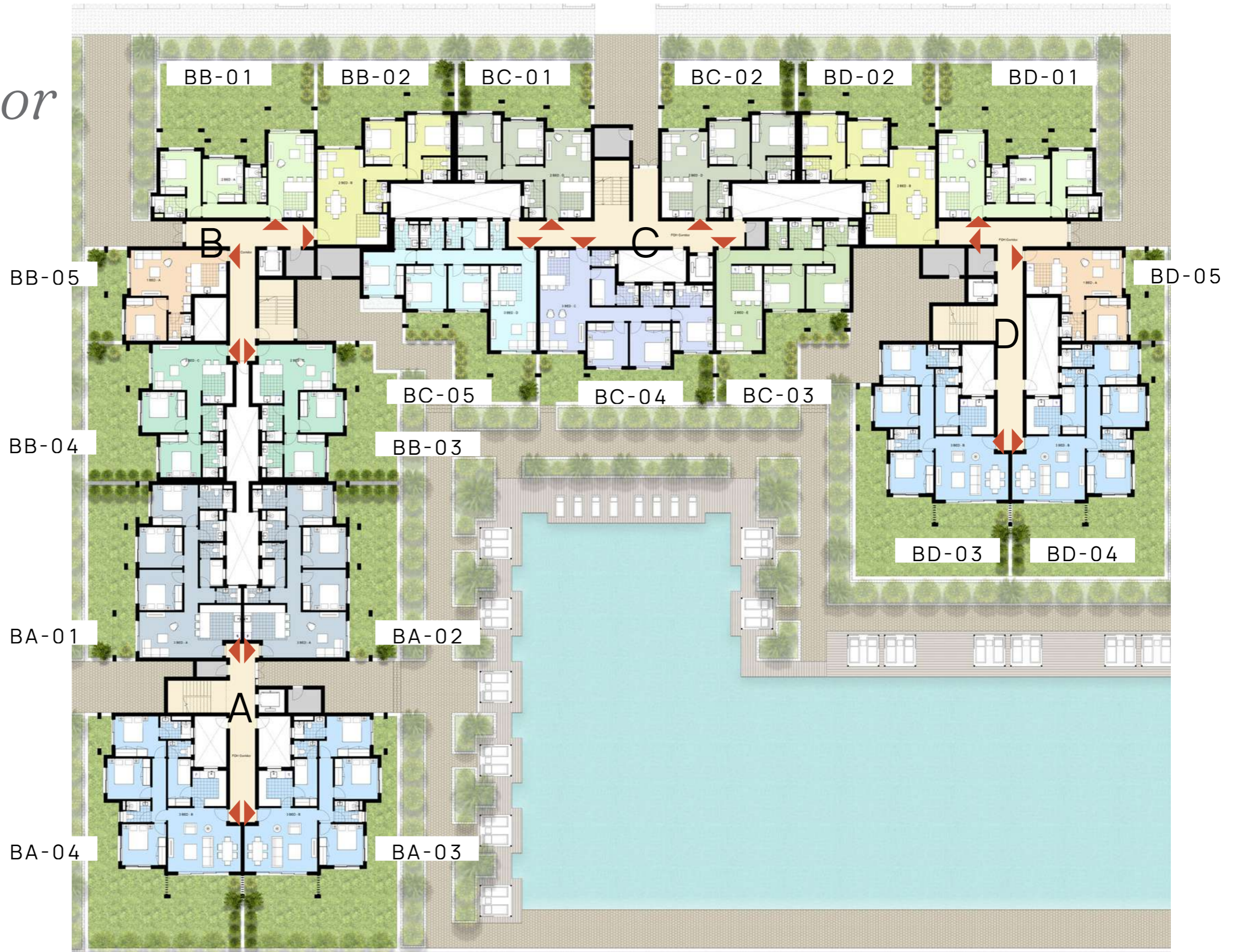


Street View



Building 1 - Ground Floor

- 1 Bed - Type A1
- 2 Bed - Type A1
- 2 Bed - Type B1
- 2 Bed - Type C1
- 2 Bed - Type D1
- 2 Bed - Type E1
- 3 Bed - Type A1
- 3 Bed - Type B1
- 3 Bed - Type C1
- 3 Bed - Type D1

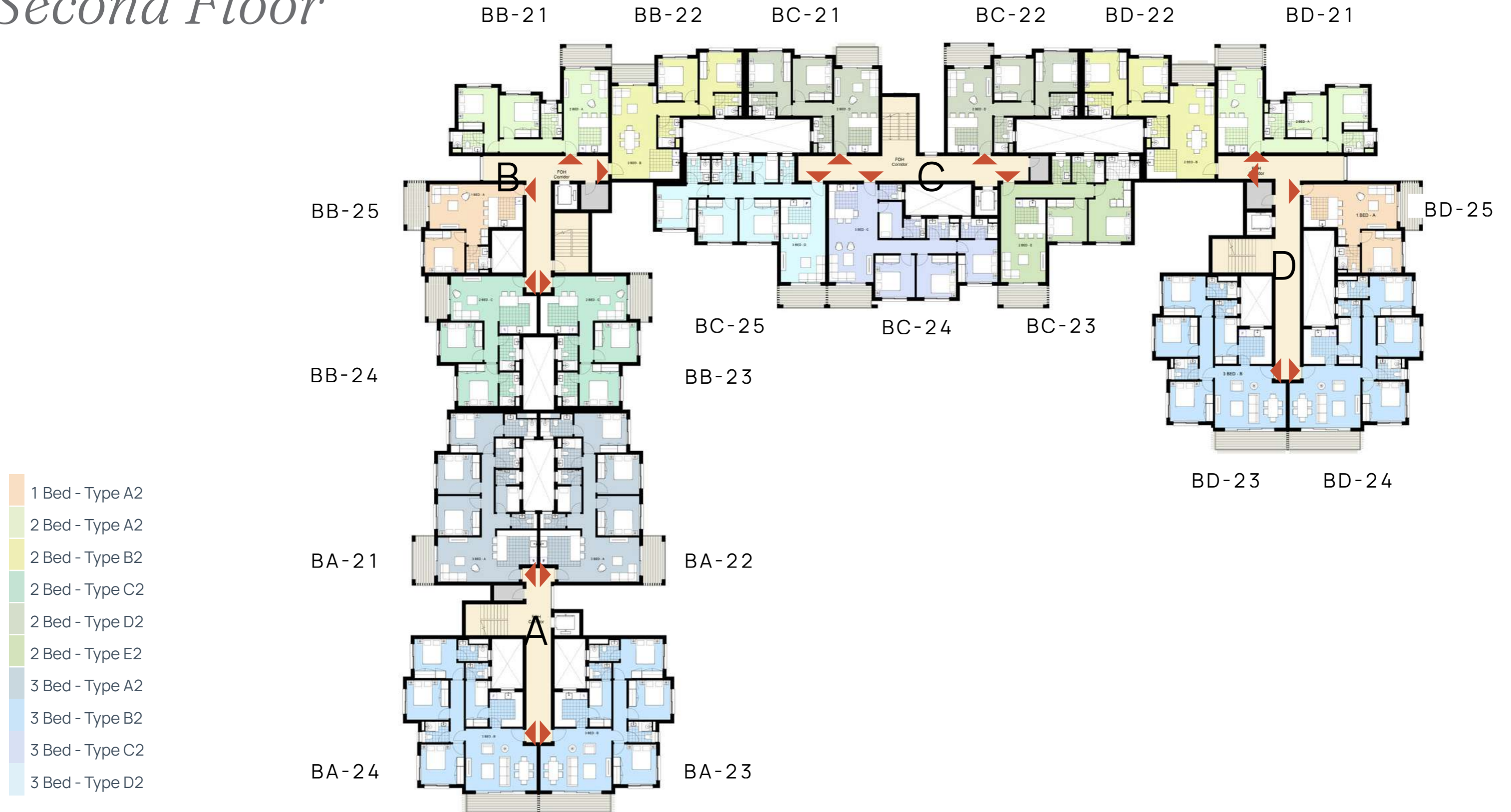


Building 1 - First Floor



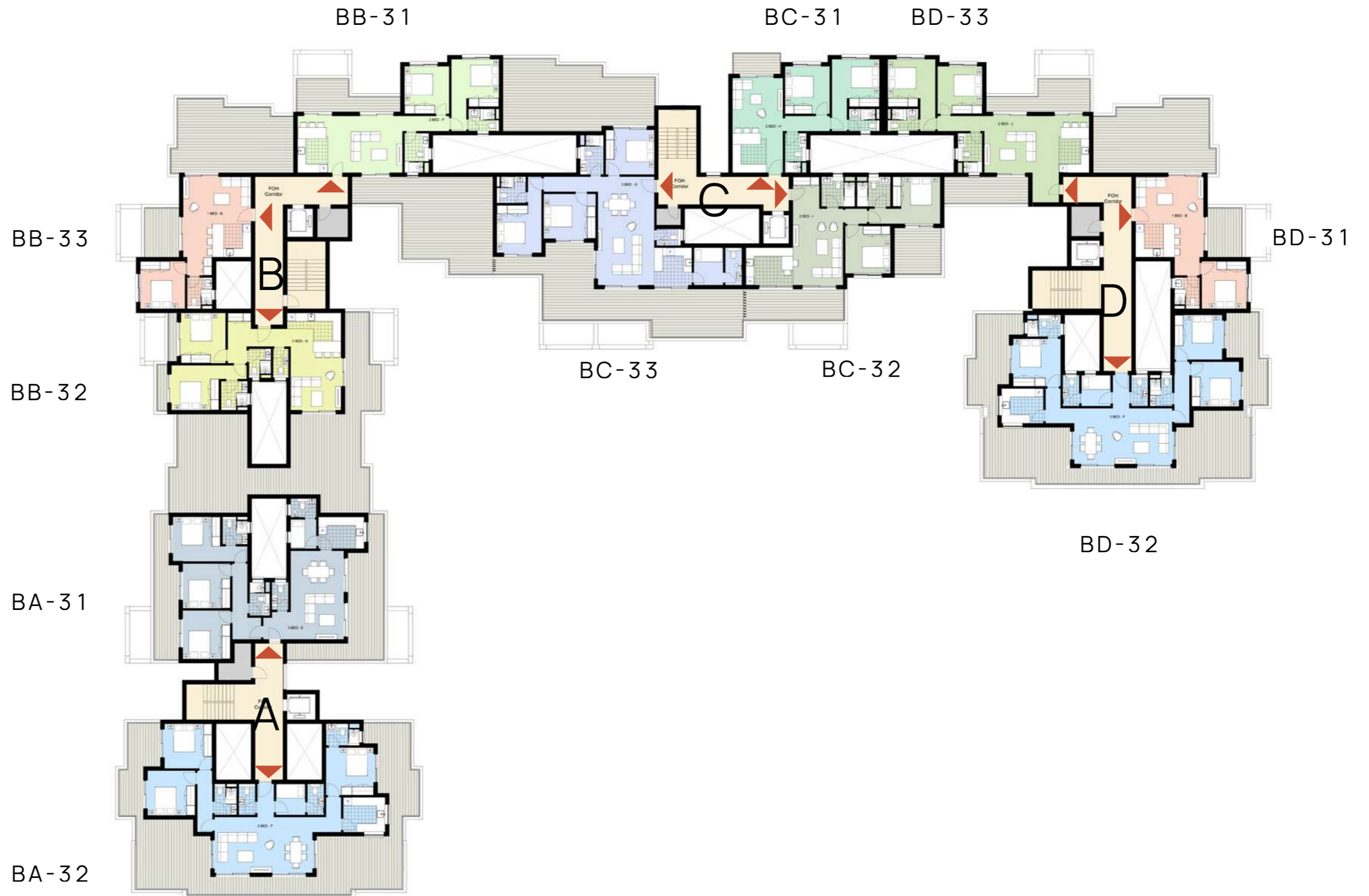
- 1 Bed - Type A2
- 2 Bed - Type A2
- 2 Bed - Type B2
- 2 Bed - Type C2
- 2 Bed - Type D2
- 2 Bed - Type E2
- 3 Bed - Type A2
- 3 Bed - Type B2
- 3 Bed - Type C2
- 3 Bed - Type D2

Building 1 - Second Floor

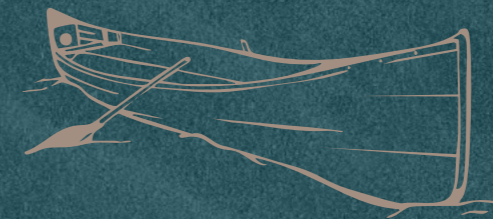


Building 1 - Roof Floor

- 1 Bed - Type B
- 2 Bed - Type F
- 2 Bed - Type G
- 2 Bed - Type H
- 2 Bed - Type I
- 2 Bed - Type J
- 3 Bed - Type E
- 3 Bed - Type F
- 3 Bed - Type G



*Branded
Apartments
Unit Types*

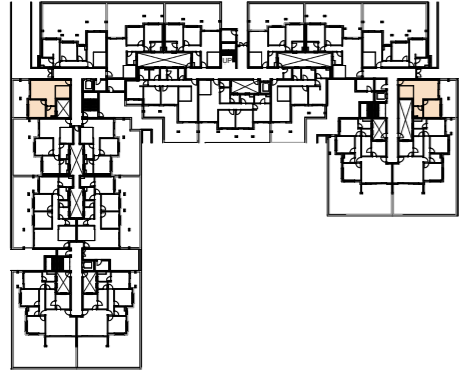






1 Bed Apartment - Type A1

BB-05 | BD-05



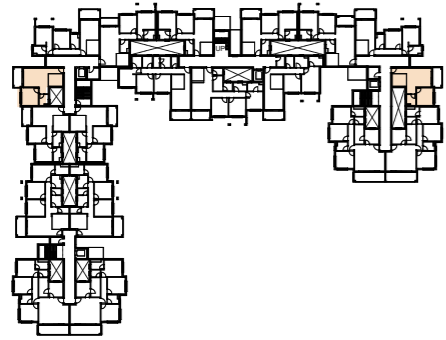
	sqm
Total Gross Area	61
BB-05 Garden Area	23.36
BD-05 Garden Area	22.97

Room	Dimensions
1 Entrance	2.75m x 1.05m
2 Living/Dining	4.70m x 3.55m
3 Kitchen	2.75m x 2.35m
4 Bathroom	1.75m x 2.05m
5 Bedroom 1	3.15m x 3.35m



1 Bed Apartment - Type A2

BB-15 | BB-25 | BD-15 | BD-25



sqm

Total Gross Area 70

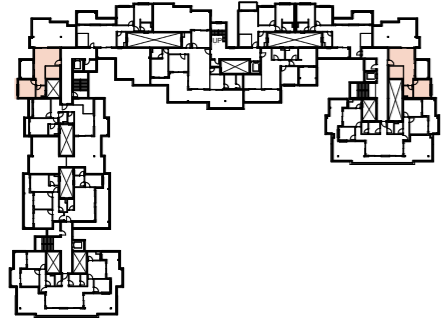
Incl. Terrace Area 9

Room	Dimensions
1 Entrance	2.75m x 1.00m
2 Living/Dining	4.70m x 3.55m
3 Kitchen	2.75m x 2.35m
4 Bathroom	2.05m x 1.75m
5 Bedroom 1	3.15m x 3.35m
6 Terrace 1	1.80m x 4.00m



1 Bed Apartment - Type B

BB-33 | BD-31

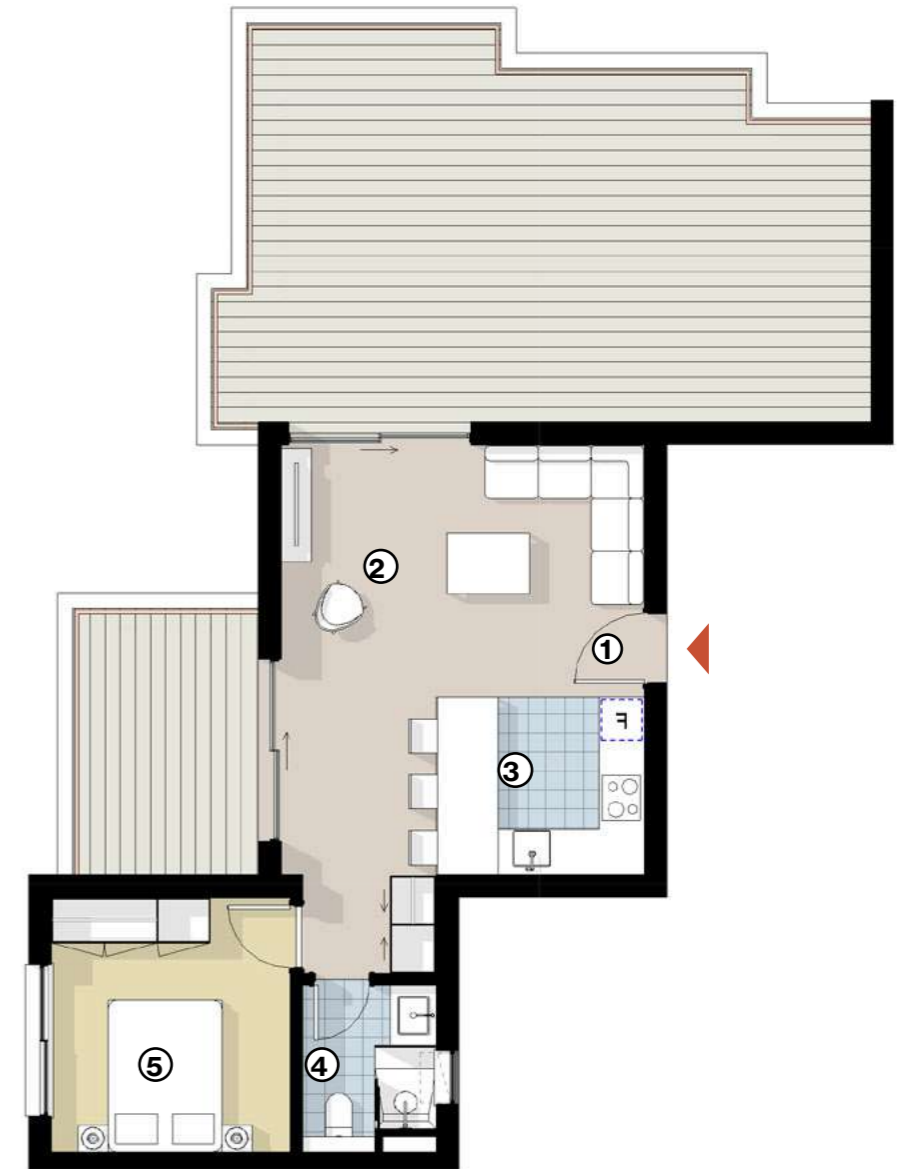


sqm

Total Gross Area 65

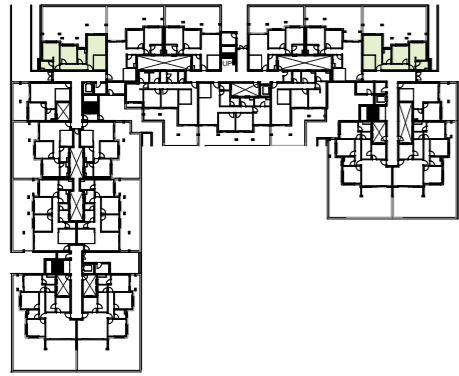
Roof Terrace Area 53.68

Room	Dimensions
1 Entrance	-
2 Living/Dining	4.80m x 3.30m
3 Kitchen	2.75m x 2.30m
4 Bathroom	2.20m x 1.75m
5 Bedroom 1	3.15m x 3.35m



2 Bed Apartment - Type A1

BB-01 | BD-01

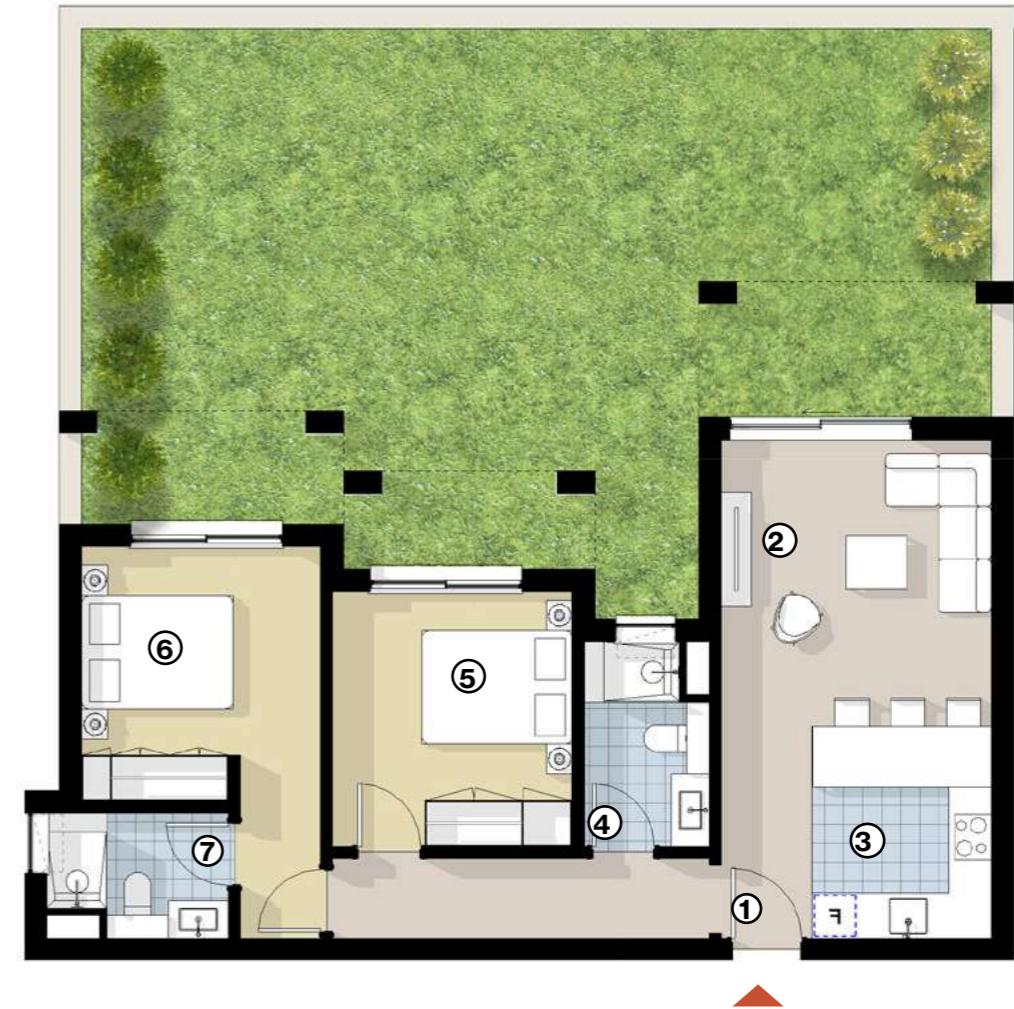


sqm

Total Gross Area 87

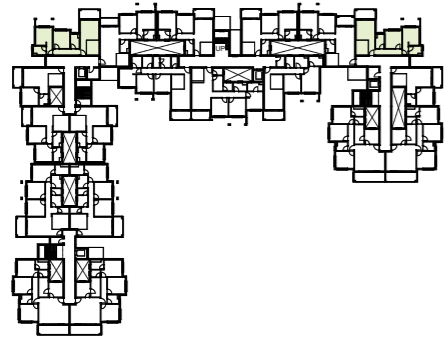
Garden Area 82.64

Room	Dimensions
1 Entrance	1.20m x 2.80m
2 Living/Dining	3.55m x 3.75m
3 Kitchen	2.35m x 2.80m
4 Bathroom	1.65m x 2.70m
5 Bedroom 1	3.35m x 3.15m
6 Master Bedroom	3.15m x 3.35m
7 Master Bathroom	2.40m x 1.65m



2 Bed Apartment - Type A2

BB-11 | BB-21 | BD-11 | BD-21

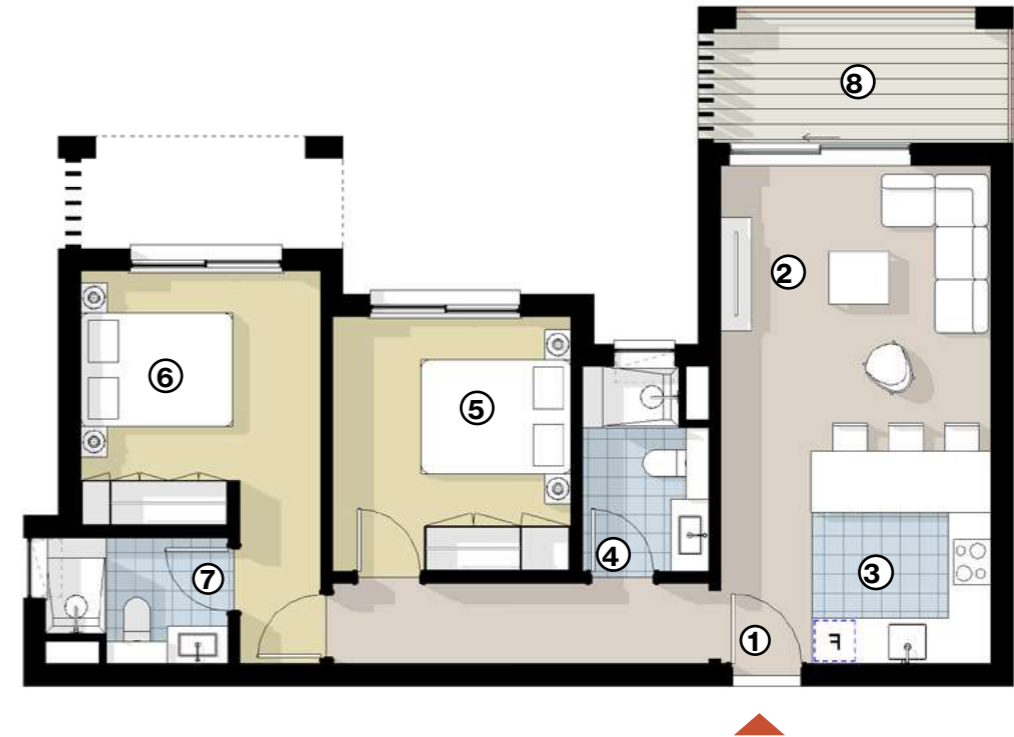


sqm

Total Gross Area 96

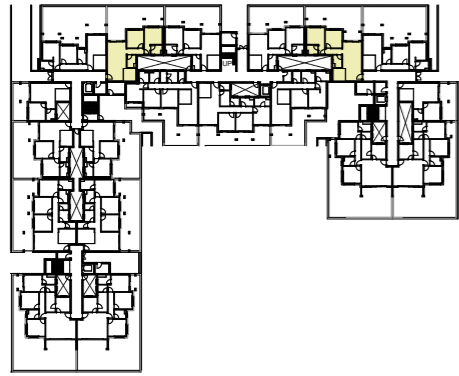
Incl. Terrace Area 9

Room	Dimensions
1 Entrance	1.15m x 2.80m
2 Living/Dining	3.55m x 3.75m
3 Kitchen	2.80m x 2.35m
4 Bathroom	2.70m x 1.65m
5 Bedroom 1	3.35m x 3.15m
6 Master Bedroom	3.15m x 3.35m
7 Master Bathroom	2.40m x 1.65m
8 Terrace 1	4.15m x 1.80m



2 Bed Apartment - Type B1

BB-02 | BD-02



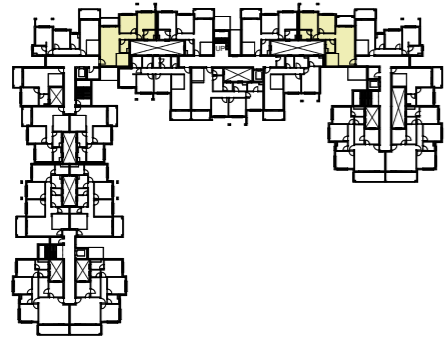
	sqm
Total Gross Area	95
BB-02 Garden Area	54.87
BD-02 Garden Area	54.57

Room	Dimensions
1 Entrance	3.00m x 2.35m
2 Living/Dining	3.55m x 5.05m
3 Kitchen	2.40m x 2.35m
4 Bathroom	1.70m x 2.35m
5 Bedroom 1	3.15m x 3.35m
6 Master Bedroom	3.15m x 3.35m
7 Master Bathroom	2.10m x 1.75m



2 Bed Apartment - Type B2

BB-12 | BB-22 | BD-12 | BD-22

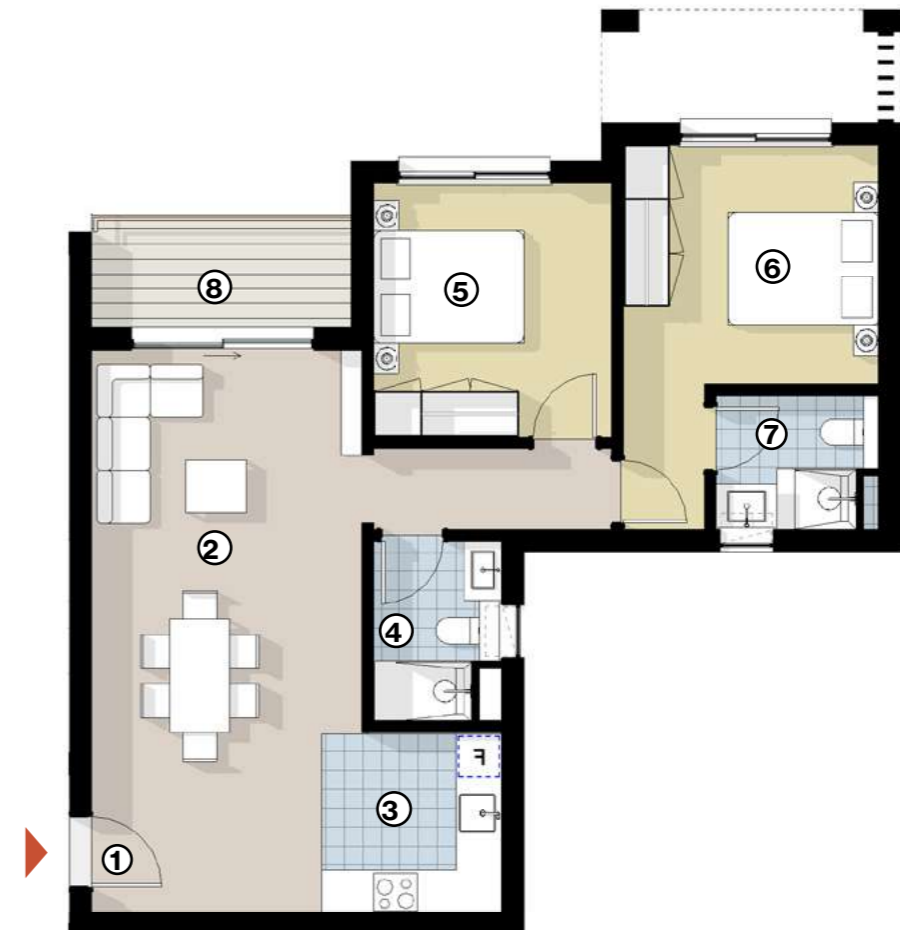


sqm

Total Gross Area 102

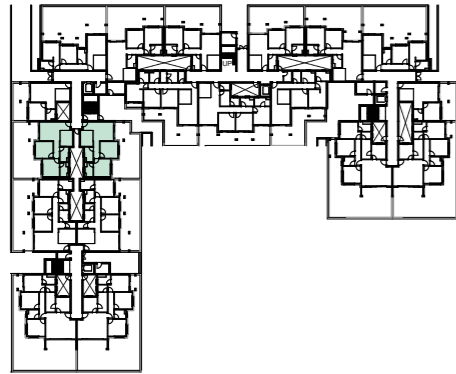
Incl. Terrace Area 8

Room	Dimensions
1 Entrance	3.00m x 2.35m
2 Living/Dining	3.55m x 5.05m
3 Kitchen	2.35m x 2.40m
4 Bathroom	2.35m x 1.70m
5 Bedroom 1	3.15m x 3.35m
6 Master Bedroom	3.35m x 3.15m
7 Master Bathroom	2.10m x 1.75m
8 Terrace 1	3.40m x 1.45m



2 Bed Apartment - Type C1

BB-04 | BB-03



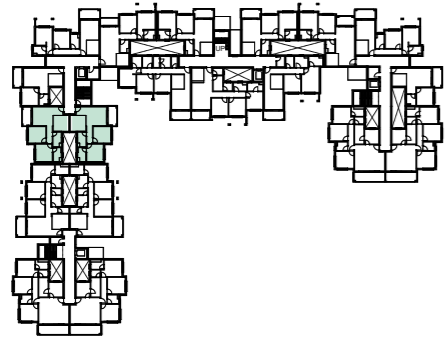
	sqm
Total Gross Area	84
BB-03 Garden Area	50.67
BB-04 Garden Area	54.1

Room	Dimensions
1 Entrance	1.55m x 1.85m
2 Living/Dining	3.85m x 3.55m
3 Kitchen	2.35m x 3.00m
4 Bathroom	1.55m x 2.80m
5 Bedroom 1	3.35m x 3.15m
6 Master Bedroom	3.15m x 3.35m
7 Master Bathroom	1.55m x 2.65m



2 Bed Apartment - Type C2

BB-14 | BB-24 | BB-13 | BB-23

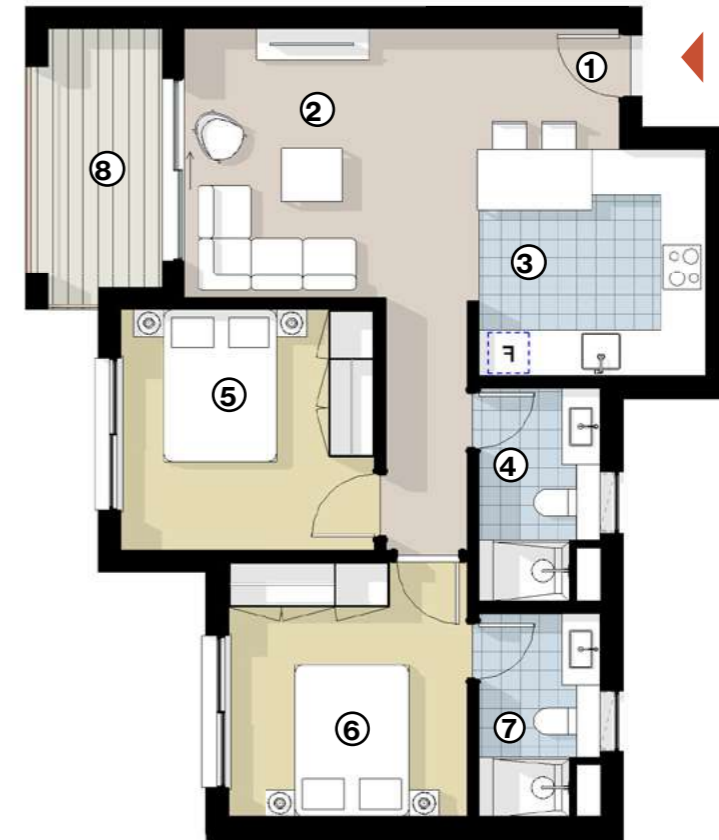


sqm

Total Gross Area 94

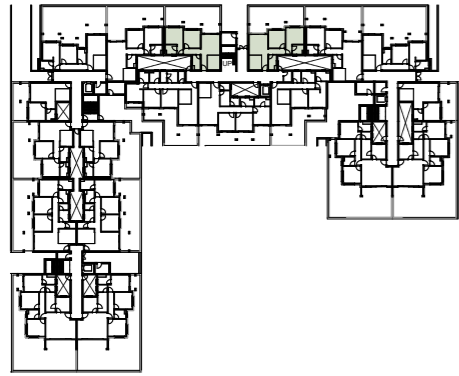
Incl. Terrace Area 9

Room	Dimensions
1 Entrance	1.55m x 1.85m
2 Living/Dining	3.85m x 3.55m
3 Kitchen	3.10m x 3.00m
4 Bathroom	1.55m x 2.80m
5 Bedroom 1	3.15m x 3.35m
6 Master Bedroom	3.15m x 3.35m
7 Master Bathroom	1.60m x 2.65m
8 Terrace 1	1.80m x 4.00m



2 Bed Apartment - Type D1

BC-01 | BC-02



sqm

Total Gross Area 85

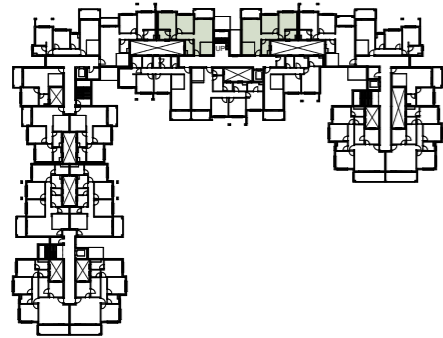
Garden Area 49.52

Room	Dimensions
1 Entrance	1.15m x 2.80m
2 Living/Dining	3.55m x 3.90m
3 Kitchen	2.40m x 2.80m
4 Bathroom	2.75m x 1.50m
5 Bedroom 1	3.15m x 3.35m
6 Master Bedroom	3.15m x 3.35m
7 Master Bathroom	2.10m x 1.75m



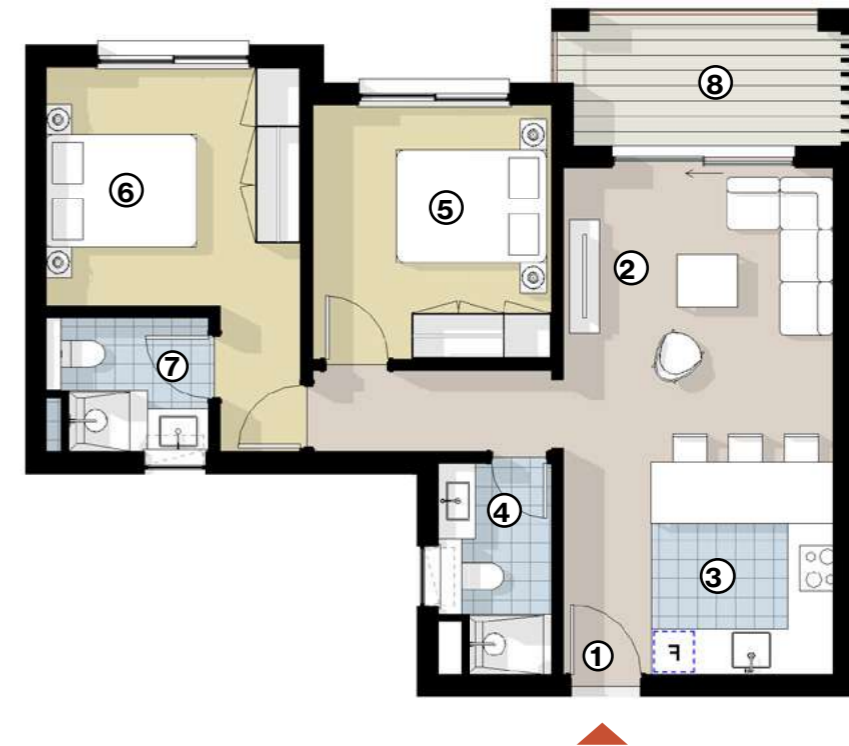
2 Bed Apartment - Type D2

BC-11 | BC-21 | BC-12 | BC-22



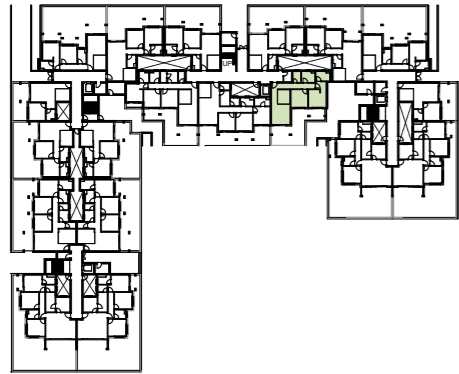
	sqm
Total Gross Area	94
Incl. Terrace Area	9

Room	Dimensions
1 Entrance	2.80m x 1.15m
2 Living/Dining	3.55m x 3.90m
3 Kitchen	2.40m x 2.80m
4 Bathroom	1.50m x 2.75m
5 Bedroom 1	3.15m x 3.35m
6 Master Bedroom	3.15m x 3.35m
7 Master Bathroom	1.75m x 2.10m
8 Terrace 1	4.00m x 1.80m



2 Bed Apartment - Type E1

BC-03



sqm

Total Gross Area 101

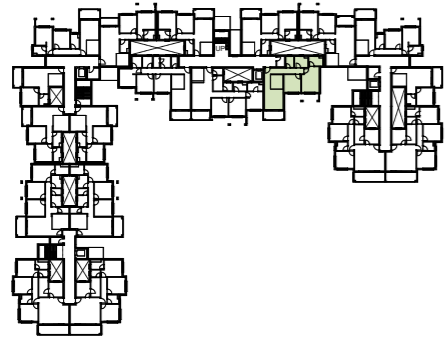
Garden Area 45.07

Room	Dimensions
1 Entrance	1.15m x 3.95m
2 Living/Dining	3.55m x 3.85m
3 Kitchen	2.75m x 2.40m
4 Guest WC	1.45m x 2.10m
5 Bathroom	2.10m x 2.55m
6 Bedroom 1	3.35m x 3.15m
7 Master Bedroom	3.35m x 3.35m
8 Master Bathroom	2.65m x 1.80m



2 Bed Apartment - Type E2

BC-13 | BC-23

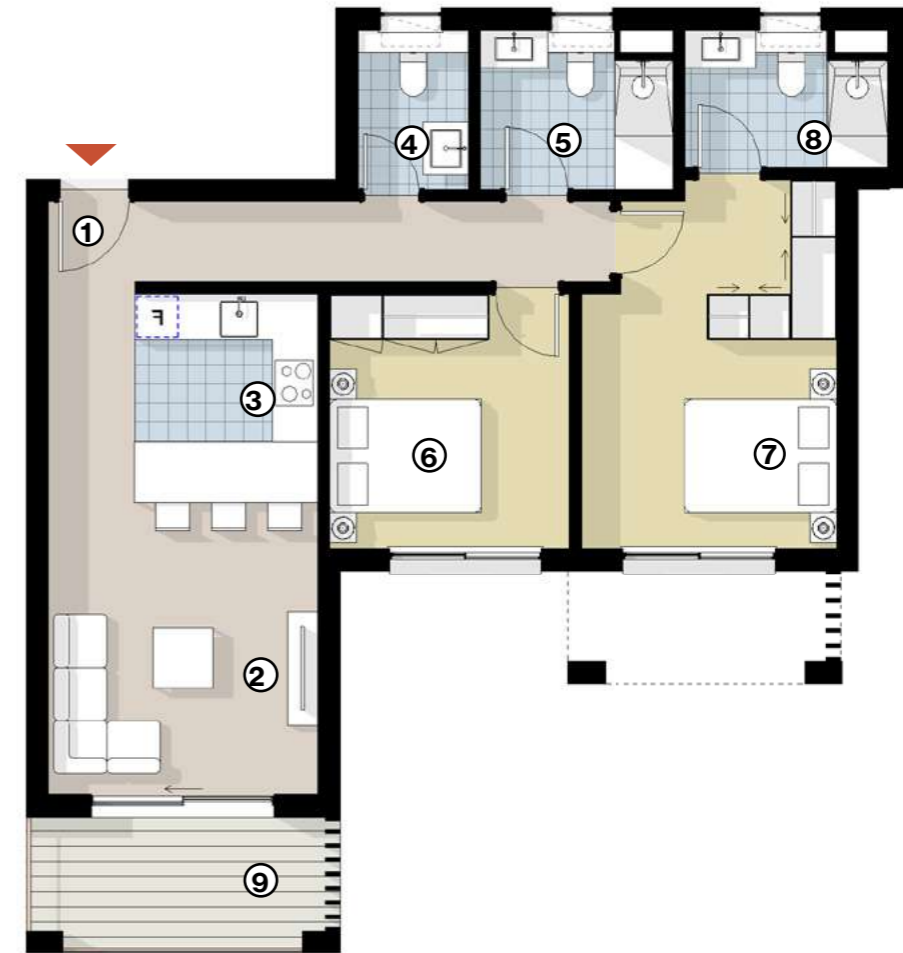


sqm

Total Gross Area 110

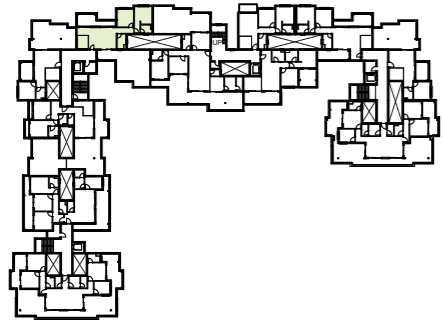
Incl. Terrace Area 9

Room	Dimensions
1 Entrance	1.15m x 3.95m
2 Living/Dining	3.55m x 3.85m
3 Kitchen	2.75m x 2.40m
4 Guest WC	1.45m x 2.10m
5 Bathroom	2.55m x 2.10m
6 Bedroom 1	3.15m x 3.35m
7 Master Bedroom	3.35m x 4.85m
8 Master Bathroom	2.65m x 1.80m
9 Terrace 1	4.15m x 1.75m



2 Bed Apartment - Type F

BB-31



sqm

Total Gross Area 96

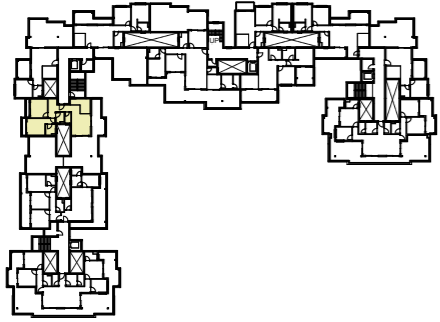
Roof Terrace Area 67.49

Room	Dimensions
1 Entrance	-
2 Living/Dining	5.25m x 4.00m
3 Kitchen	2.10m x 4.00m
4 Bathroom	2.75m x 1.70m
5 Bedroom 1	3.35m x 3.15m
6 Master Bedroom	3.35m x 3.35m
7 Master Bathroom	2.10m x 1.55m



2 Bed Apartment - Type G

BB-32



sqm

Total Gross Area	98
------------------	----

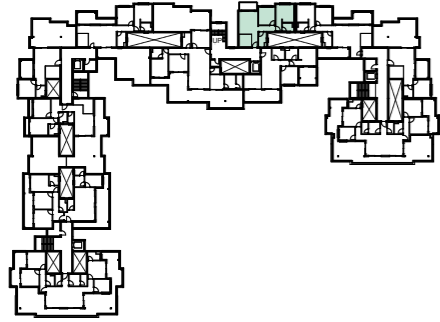
Roof Terrace Area	108.18
-------------------	--------

Room	Dimensions
1 Entrance	4.20m x 1.25m
2 Living/Dining	4.05m x 3.55m
3 Kitchen	3.80m x 2.80m
4 Guest WC	2.05m x 1.05m
5 Bathroom	1.55m x 2.05m
6 Bedroom 1	3.15m x 3.55m
7 Master Bedroom	3.15m x 3.35m
8 Master Bathroom	1.85m x 2.00m



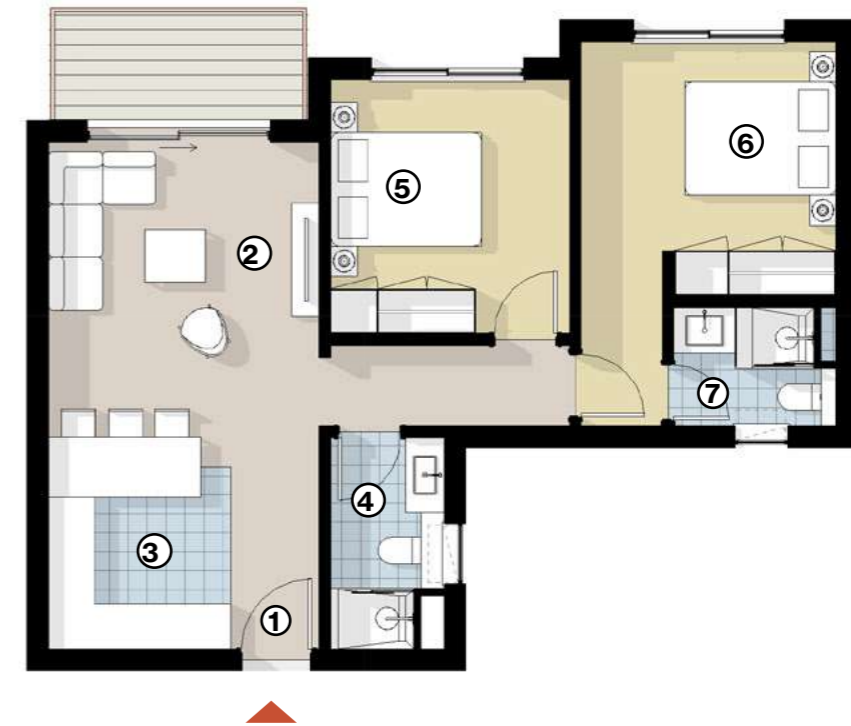
2 Bed Apartment - Type H

BC-31



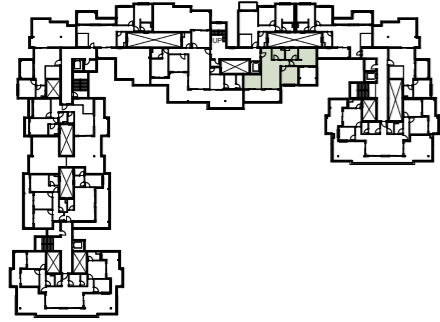
	sqm
Total Gross Area	85
Roof Terrace Area	5.13

Room	Dimensions
1 Entrance	1.15m x 2.80m
2 Living/Dining	3.55m x 3.90m
3 Kitchen	2.40m x 2.80m
4 Bathroom	2.75m x 1.50m
5 Bedroom 1	3.15m x 3.35m
6 Master Bedroom	3.35m x 3.35m
7 Master Bathroom	2.10m x 1.55m



2 Bed Apartment - Type I

BC-32



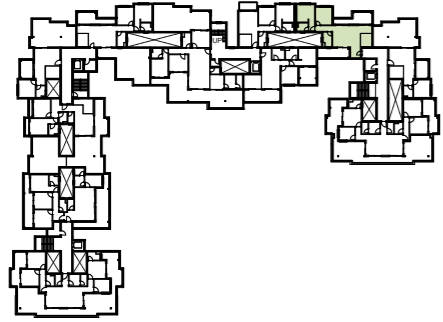
	sqm
Total Gross Area	97
Roof Terrace Area	30.26

Room	Dimensions
1 Entrance	1.85m x 2.25m
2 Living/Dining	3.50m x 5.40m
3 Kitchen	3.30m x 2.65m
4 Bathroom	2.35m x 2.10m
5 Bedroom 1	3.20m x 3.35m
6 Master Bedroom	3.35m x 3.30m
7 Master Bathroom	2.10m x 2.35m



2 Bed Apartment - Type J

BD-33



sqm

Total Gross Area 102

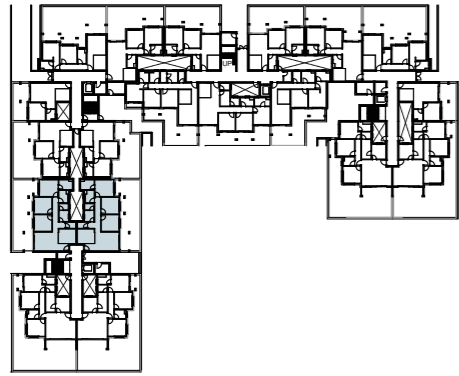
Roof Terrace Area 27.91

Room	Dimensions
1 Entrance	1.90m x 2.10m
2 Living/Dining	5.40m x 4.00m
3 Kitchen	2.10m x 4.00m
4 Bathroom	1.70m x 2.75m
5 Bedroom 1	3.35m x 3.15m
6 Master Bedroom	3.35m x 3.35m
7 Master Bathroom	2.10m x 1.55m



3 Bed Apartment - Type A1

BA-01 | BA-02



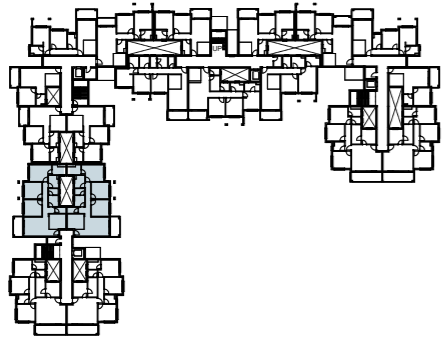
	sqm
Total Gross Area	124
Garden Area	58.29

Room	Dimensions
1 Entrance	1.35m x 1.90m
2 Living/Dining	4.55m x 3.55m
3 Kitchen	3.35m x 2.70m
4 Guest WC	1.15m x 1.85m
5 Maid's room	1.80m x 2.05m
6 Maid's WC	1.15m x 1.80m
7 Bathroom	2.35m x 1.80m
8 Bedroom 1	3.15m x 3.35m
9 Bedroom 2	3.15m x 3.35m
10 Master Bedroom	3.15m x 3.55m
11 Master Bathroom	2.55m x 1.85m



3 Bed Apartment - Type A2

BA-11 | BA-21 | BA-12 | BA-22



sqm

Total Gross Area 134

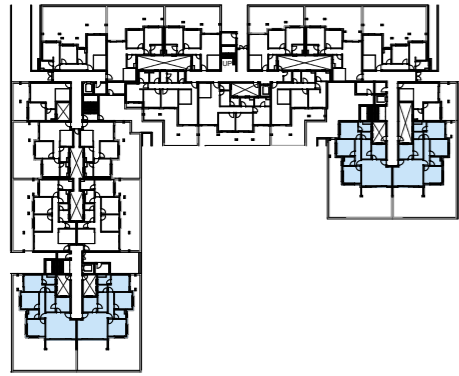
Incl. Terrace Area 9

Room	Dimensions
1 Entrance	1.35m x 1.90m
2 Living/Dining	4.55m x 3.55m
3 Kitchen	3.35m x 2.70m
4 Guest WC	2.00m x 1.15m
5 Maid's room	2.05m x 1.90m
6 Maid's WC	1.15m x 1.90m
7 Bathroom	2.35m x 1.85m
8 Bedroom 1	3.15m x 3.35m
9 Bedroom 2	3.15m x 3.35m
10 Master Bedroom	3.15m x 4.15m
11 Master Bathroom	2.55m x 1.75m
12 Terrace 1	4.00m x 1.80m



3 Bed Apartment - Type B1

BA-04 | BA-03 | BD-03 | BD-04



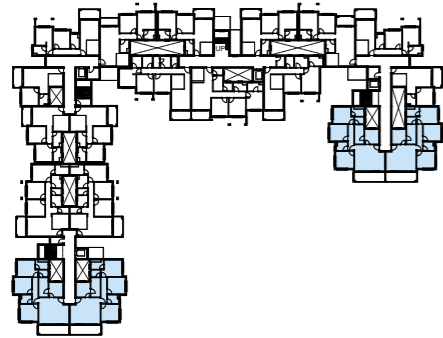
	sqm
Total Gross Area	127
BD-03 Garden Area	96.76
BD-04 Garden Area	103.26
BA-03/ BA-04 Garden Area	103.35

Room	Dimensions
1 Entrance	1.40m x 4.55m
2 Living/Dining	5.65m x 3.55m
3 Kitchen	2.75m x 2.60m
4 Maid's room	3.65m x 1.75m
5 Maid's WC	1.80m x 1.25m
6 Bathroom	2.15m x 1.65m
7 Bedroom 1	3.20m x 3.35m
8 Bedroom 2	3.15m x 3.35m
9 Master Bedroom	3.15m x 3.35m
10 Master Bathroom	2.40m x 1.35m



3 Bed Apartment - Type B2

BA-14 | BA-24 | BA-13 | BA-23 | BD-13 | BD-23 | BD-14 | BD-24

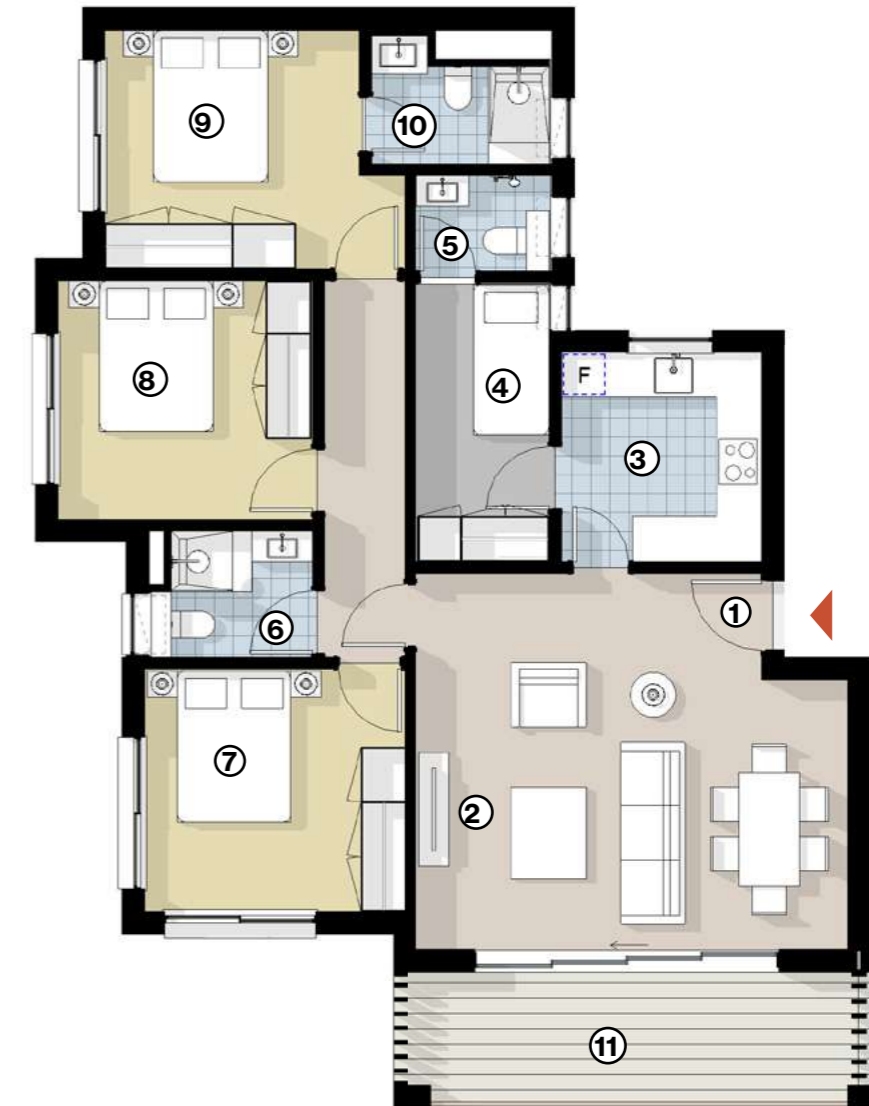


sqm

Total Gross Area 140

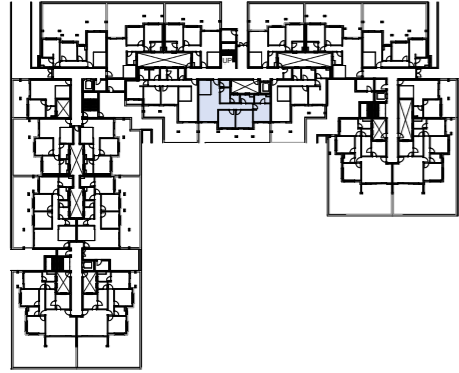
Incl. Terrace Area 14

Room	Dimensions
1 Entrance	1.40m x 4.55m
2 Living/Dining	5.65m x 3.55m
3 Kitchen	2.75m x 2.60m
4 Maid's room	3.65m x 1.75m
5 Maid's WC	1.25m x 1.80m
6 Bathroom	2.15m x 1.65m
7 Bedroom 1	3.40m x 3.20m
8 Bedroom 2	3.15m x 3.35m
9 Master Bedroom	3.15m x 3.35m
10 Master Bathroom	2.40m x 1.75m
11 Terrace 1	6.10m x 1.80m



3 Bed Apartment - Type C1

BC-04



sqm

Total Gross Area 122

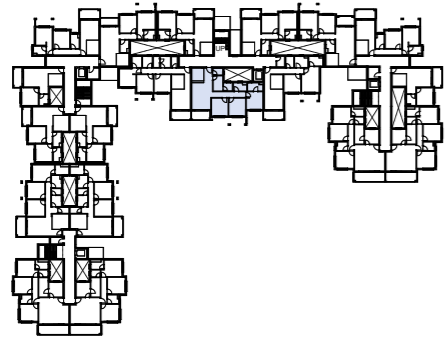
Garden Area 46.07

Room	Dimensions
1 Entrance	1.60m x 2.75m
2 Living/Dining	5.05m x 3.55m
3 Kitchen	2.25m x 2.75m
4 Guest WC	1.80m x 1.25m
5 Maid's room	1.80m x 2.90m
6 Maid's WC	1.70m x 1.55m
7 Bathroom	2.55m x 1.55m
8 Bedroom 1	3.15m x 3.35m
9 Bedroom 2	3.15m x 3.35m
10 Master Bedroom	3.15m x 3.35m
11 Master Bathroom	2.90m x 1.55m



3 Bed Apartment - Type C2

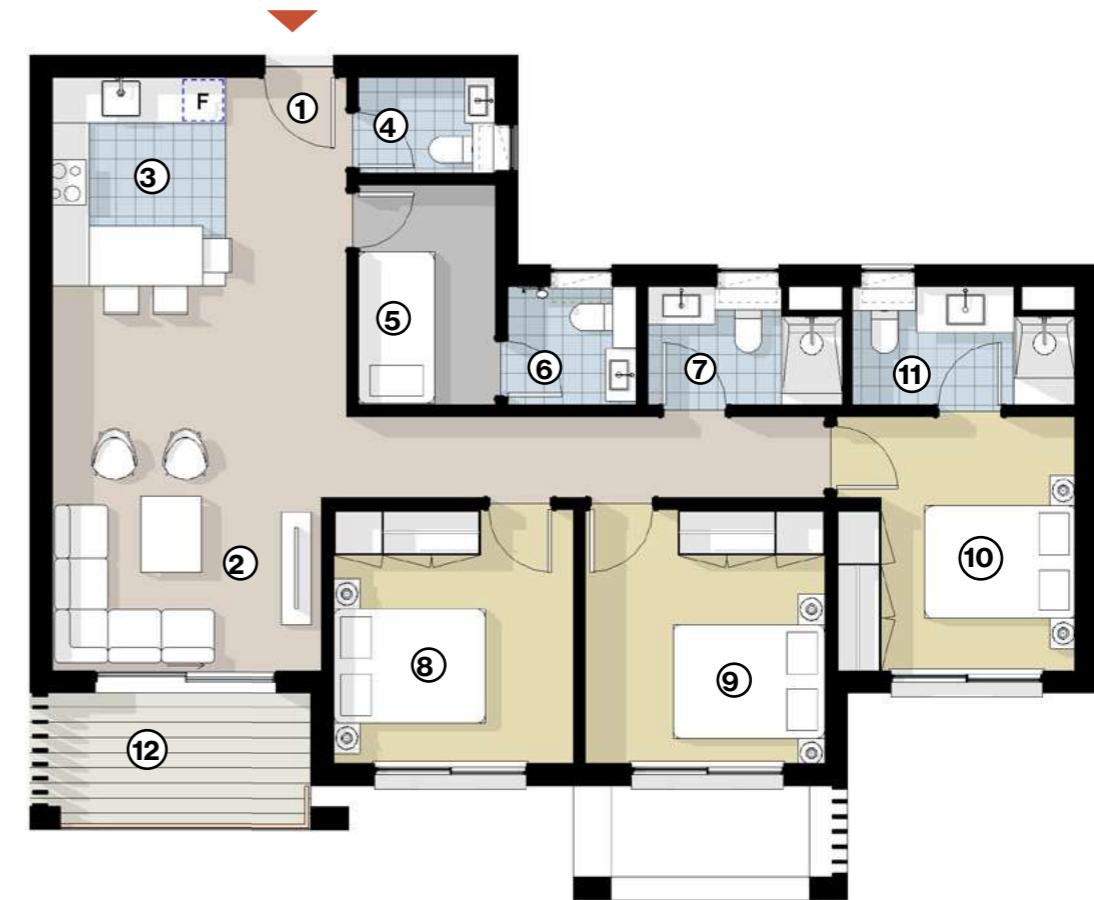
BC-14 | BC-24



sqm

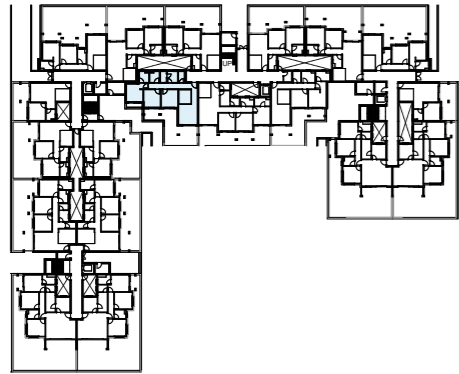
Total Gross Area	130
Incl. Terrace Area	8

Room	Dimensions
1 Entrance	1.60m x 2.75m
2 Living/Dining	5.05m x 3.55m
3 Kitchen	2.25m x 2.75m
4 Guest WC	1.25m x 1.80m
5 Maid's room	2.90m x 1.80m
6 Maid's WC	1.55m x 1.65m
7 Bathroom	2.55m x 1.55m
8 Bedroom 1	3.15m x 3.35m
9 Bedroom 2	3.15m x 3.35m
10 Master Bedroom	3.15m x 3.35m
11 Master Bathroom	1.55m x 2.90m
12 Terrace 1	3.55m x 1.80m



3 Bed Apartment - Type D1

BC-05



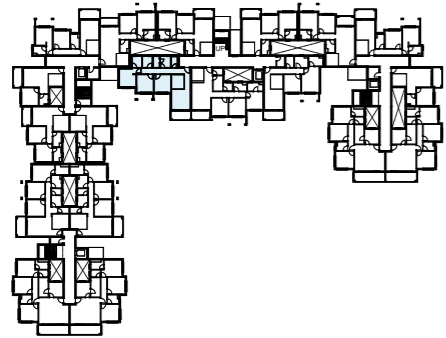
	sqm
Total Gross Area	120
Garden Area	45.1

Room	Dimensions
1 Entrance	1.15m x 3.95m
2 Living/Dining	3.85m x 3.55m
3 Kitchen	2.75m x 2.40m
4 Guest WC	2.10m x 1.15m
5 Maid's room	2.10m x 1.95m
6 Maid's WC	1.15m x 2.10m
7 Bathroom	2.10m x 1.85m
8 Bedroom 1	3.35m x 3.15m
9 Bedroom 2	3.35m x 3.15m
10 Master Bedroom	3.15m x 3.35m
11 Master Bathroom	2.10m x 1.85m



3 Bed Apartment - Type D2

BC-15 | BC-25



sqm

Total Gross Area 129

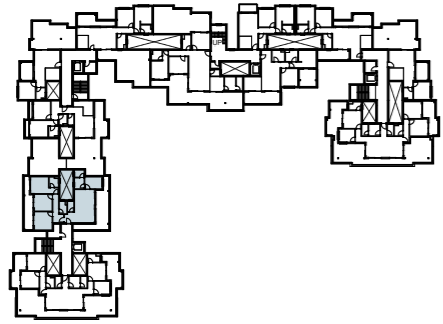
Incl. Terrace Area 9

Room	Dimensions
1 Entrance	1.15m x 3.95m
2 Living/Dining	3.55m x 3.85m
3 Kitchen	2.75m x 2.40m
4 Guest WC	2.10m x 1.15m
5 Maid's room	2.10m x 1.95m
6 Maid's WC	1.15m x 2.10m
7 Bathroom	2.10m x 1.85m
8 Bedroom 1	3.15m x 3.35m
9 Bedroom 2	3.35m x 3.15m
10 Master Bedroom	3.15m x 3.35m
11 Master Bathroom	2.10m x 1.85m
12 Terrace 1	4.00m x 1.80m



3 Bed Apartment - Type E

BA-31



sqm

Total Gross Area 135

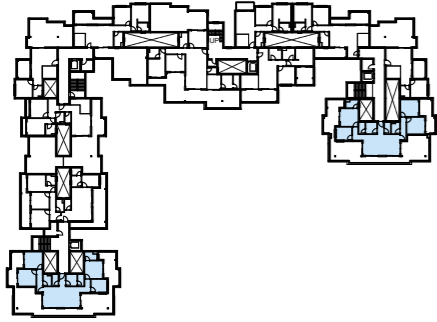
Roof Terrace Area 50.42

Room	Dimensions
1 Entrance	1.90m x 1.95m
2 Living/Dining	3.75m x 6.25m
3 Kitchen	2.20m x 3.20m
4 Guest WC	1.95m x 1.15m
5 Maid's room	1.80m x 2.05m
6 Maid's WC	1.80m x 1.30m
7 Bathroom	1.40m x 2.35m
8 Bedroom 1	3.40m x 3.35m
9 Bedroom 2	3.15m x 3.35m
10 Master Bedroom	3.15m x 3.35m
11 Master Bathroom	1.90m x 1.75m



3 Bed Apartment - Type F

BA-32 | BD-32



sqm

Total Gross Area 141

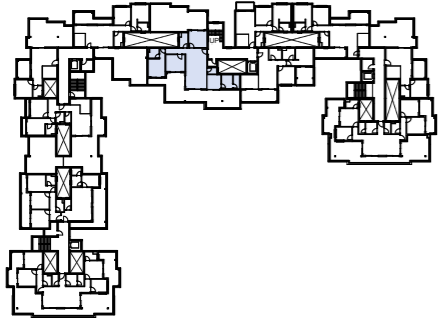
Roof Terrace Area 105.14

Room	Dimensions
1 Entrance	1.15m x 2.35m
2 Living/Dining	6.95m x 3.90m
3 Kitchen	2.95m x 2.45m
4 Guest WC	1.15m x 2.15m
5 Maid's room	2.15m x 2.05m
6 Maid's WC	1.15m x 2.15m
7 Bathroom	2.15m x 1.55m
8 Bedroom 1	3.15m x 3.35m
9 Bedroom 2	3.35m x 3.15m
10 Master Bedroom	3.35m x 3.35m
11 Master Bathroom	1.50m x 2.35m



3 Bed Apartment - Type G

BC-33



sqm

Total Gross Area	138
------------------	-----

Roof Terrace Area	113.42
-------------------	--------

Room	Dimensions
1 Entrance	3.95m x 1.05m
2 Living/Dining	3.95m x 6.60m
3 Kitchen	2.65m x 2.65m
4 Guest WC	1.70m x 1.15m
5 Maid's room	2.65m x 2.05m
6 Maid's WC	2.65m x 1.15m
7 Bathroom	2.75m x 1.60m
8 Bedroom 1	3.40m x 3.15m
9 Bedroom 2	3.15m x 3.65m
10 Master Bedroom	3.35m x 3.15m
11 Master Bathroom	2.00m x 1.85m



- ALL LANDSCAPING ELEMENTS AND INTERIOR/EXTERIOR FURNITURE ARE SHOWN FOR ILLUSTRATIVE PURPOSES ONLY AND ARE NOT LEGALLY BINDING. THEY ARE ALSO SUBJECT FOR MODIFICATION BASED ON CONSTRUCTION REQUIREMENTS AND AUTHORITIES REGULATIONS.
- ARCHITECTURAL PLANS AND PERSPECTIVES MIGHT BE MODIFIED ACCORDING TO THE FINAL DESIGN AND AUTHORITIES REGULATIONS.
- INTERNAL DIMENSIONS ARE LINKED TO THE STRUCTURAL ELEMENTS AND INCLUDE PLASTER AND WALL FINISHES THICKNESS.
- SOLD UNITS DO NOT INCLUDE ANY OF THE SHOWN INTERIOR/EXTERIOR FURNITURE, TREES OR GREENERY.

ORA

15003

WWW.ORA-EGYPT.COM

